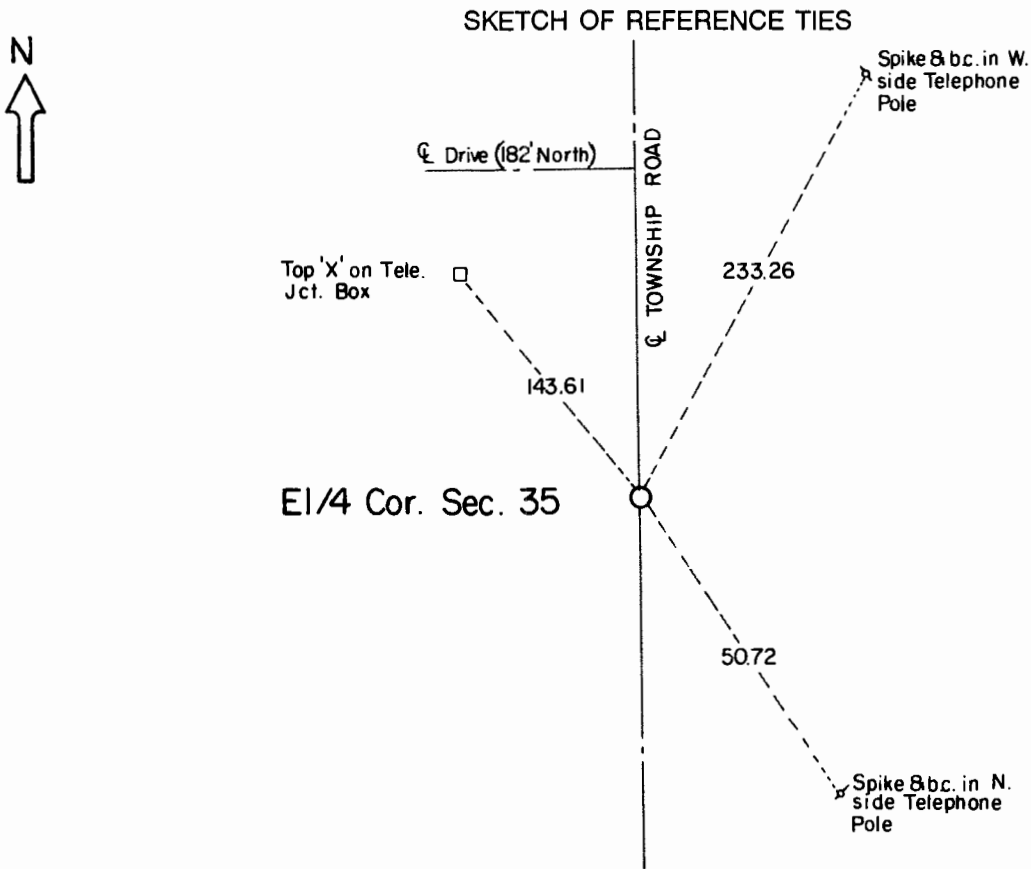


CERTIFICATE OF LOCATION OF GOVERNMENT CORNER

East Quarter Corner of Section **35** , Township **108** , Range **41** 5th P.M.
STATE OF MINNESOTA, County of Murray.

Statement: Aug. 9, 1989 - Found 3/4 inch iron pipe at the surface and a 14 inch x 9 inch x 8 inch field stone 4 1/2 feet below the surface.
Placed a Minnesota Department of Transportation Cast Iron Monument near the road surface.



Statement of evidence relative to this corner location is on the back of page.

I hereby certify that this document and the data contained herein was prepared by me or under my direct supervision and that I am a duly Registered Land Surveyor under the laws of the State of Minnesota.

Duane A. Bonnema Nov 6, 1989
Duane A. Bonnema Date

Minnesota Registration No. 14895

OFFICE OF THE COUNTY RECORDER
COUNTY OF MURRAY **NOV 15 1989**

I hereby certify that this document was filed in the County Recorder's office at ____ M. on the ____ day of ____ A.D., 19__

County Recorder *James V. Johnson*

By _____, Deputy

DOCUMENT NO. _____

East Quarter Cor. Sec. 35 T108N-R41W

Statement:

- September 1861 Original Government Land Office Surveyor L. G. M. Fletcher records in his field notes, "Built mound with trench pits, charred stake, per instructions."*
- 1978 The Murray County Highway Engineer's Office notes that they found nothing at this location, however they note that they should "Dig corner".*
- Aug. 9, 1989 Duane A. Bonnema, LS Reg. No. 14895, found a 3/4 inch x 24 inch Iron Pipe 4 inches below the road surface. He also found a 14 inch x 9 inch x 8 inch field stone 4.5 feet below the road surface. At a depth of 3 feet, natural ground and sod were found. A Minnesota Department of Transportation Cast Iron Monument was placed 4 inches below the road surface.*